



# COMPANY PROFILE





# STREET CON

---



# ABOUT OUR COMPANY

Xcel Construction is a premier North American leader in Building Envelope Restoration, Parking Structure Restoration and Re-Decking, Protective Coatings, and Painting services. With over 30 years of combined expertise, we deliver exceptional solutions to the commercial, industrial, and multi-unit residential sectors across the continent. Our seasoned team is dedicated to precision, innovation, and the highest standards of craftsmanship, while prioritizing safety, transparency, and customer satisfaction on every project. Through clear communication and a steadfast commitment to industry best practices, we have built a reputation for excellence and trust that extends throughout North America.

At Xcel Construction, we go beyond construction—we set new benchmarks for the industry. By integrating cutting-edge techniques and adhering to the latest standards, we deliver forward-thinking solutions that stand the test of time, meeting the diverse needs of clients from coast to coast. Partner with us to build a future where expertise, innovation, and integrity shape every project, ensuring quality and reliability for generations to come.







## Safety

Safety of our employees, clients, and communities across North America is our highest priority and the foundation of everything we do. We are proud of our strong compliance with OSHA (Occupational Safety & Health Administration), WSIB (Workplace Safety & Insurance Board), and IHSA (Infrastructure Health & Safety Association) regulations and policies, ensuring every project meets top industry standards. Our team members hold OSHA training certifications and participate in a comprehensive safety program with regular meetings, ongoing training, real-time risk assessments, and proactive hazard mitigation. All access equipment is fully compliant and undergoes routine inspections by certified rigging specialists, supported by specialized programs that manage daily tracking, documentation, and oversight of safety procedures. From advanced equipment and overhead pedestrian and vehicular protection systems to pedestrian traffic tunnels, we implement innovative safety measures that safeguard workers and the public. Led by our in-house Health and Safety Coordinator, we maintain a culture of accountability, transparency, and continuous improvement, reinforcing our commitment to safety across every project throughout North America.



## Work Culture



At Xcel Construction, we believe that great work starts with a great team. Our culture is collaborative, fun, and respectful, where every voice is valued, and success is shared. We are more than colleagues, we're a tight-knit group that supports, challenges, and celebrates each other, fostering an environment where people can grow and thrive. With a balance of dedication and enjoyment, we bring creativity, teamwork, and passion to every project, always putting our clients and each other first. Together, we don't just build structures, we build lasting relationships and a workplace that feels like family.



## Our Clients

Our clients are at the core of everything we do, and we are dedicated to building long-lasting relationships grounded in trust, transparency, and shared success. We understand that every project is unique, and we take pride in delivering tailored solutions through quick, efficient responses and open communication. By leveraging several proven programs and processes, we ensure that information flows seamlessly, decisions are made promptly, and expectations are not only met but exceeded. This commitment to partnership, responsiveness, and clarity allows us to consistently deliver results that stand the test of time while strengthening the bonds we share with our clients.



# OUR MISSION



At Xcel Construction, we are a motivated company with a mission to redefine excellence in the restoration and repair of building envelopes across North America. With a relentless focus on safety, quality, and innovation, we deliver superior construction solutions that protect and enhance the value of every project. Each job is executed with precision and strict adherence to OSHA, WSIB, and IHSA standards, ensuring the well-being of our team, clients, and stakeholders. Customer satisfaction is the cornerstone of our success, and we take pride in building long-lasting relationships through quick response times, clear communication, and customized solutions that consistently exceed expectations.



Driven by ambition and passion, we are expanding our skills, processes, and reach across North America, setting new benchmarks in the restoration industry. Our goal is not only to become a household-recognized brand but also to create meaningful, long-term opportunities for our people and their families. At Xcel Construction, we don't just build structures—we build careers, partnerships, and a culture of growth where individuals thrive and clients can depend on us for results that stand the test of time.



# OUR SERVICES

[Learn More](#)

Condominium | Multi-Residential | ICI

---

## Building Envelope Restoration

- Windows, Railings & Doors
- Balcony Rehabilitation
- Concrete, Masonry & Stucco Repairs
- Coatings & Painting
- Caulking & Sealant
- EIFS & Cladding Systems
- Roofing Repairs & Waterproofing

## Structural Concrete Restoration

- Parking Garage Rehabilitation
- Structural Slab Replacement & Column Repairs
- Expansion Joint Replacement
- Ramp & Heating Cable Replacement
- Post Tension Cable Repairs

## Waterproofing & Deck Systems

- Pool, Deck & Podium Waterproofing Systems
- Hot & Cold Applied Waterproofing Systems
- Traffic Coatings & Waterproofing Systems
- Crack Repairs, Epoxy Injections & Crystalline Waterproofing
- Asphalt & Mastic Replacement

## Interior Design & Build

- Suite & Unit Buildouts
- Office Buildouts
- Lobby, Corridor & Common Area Renovations



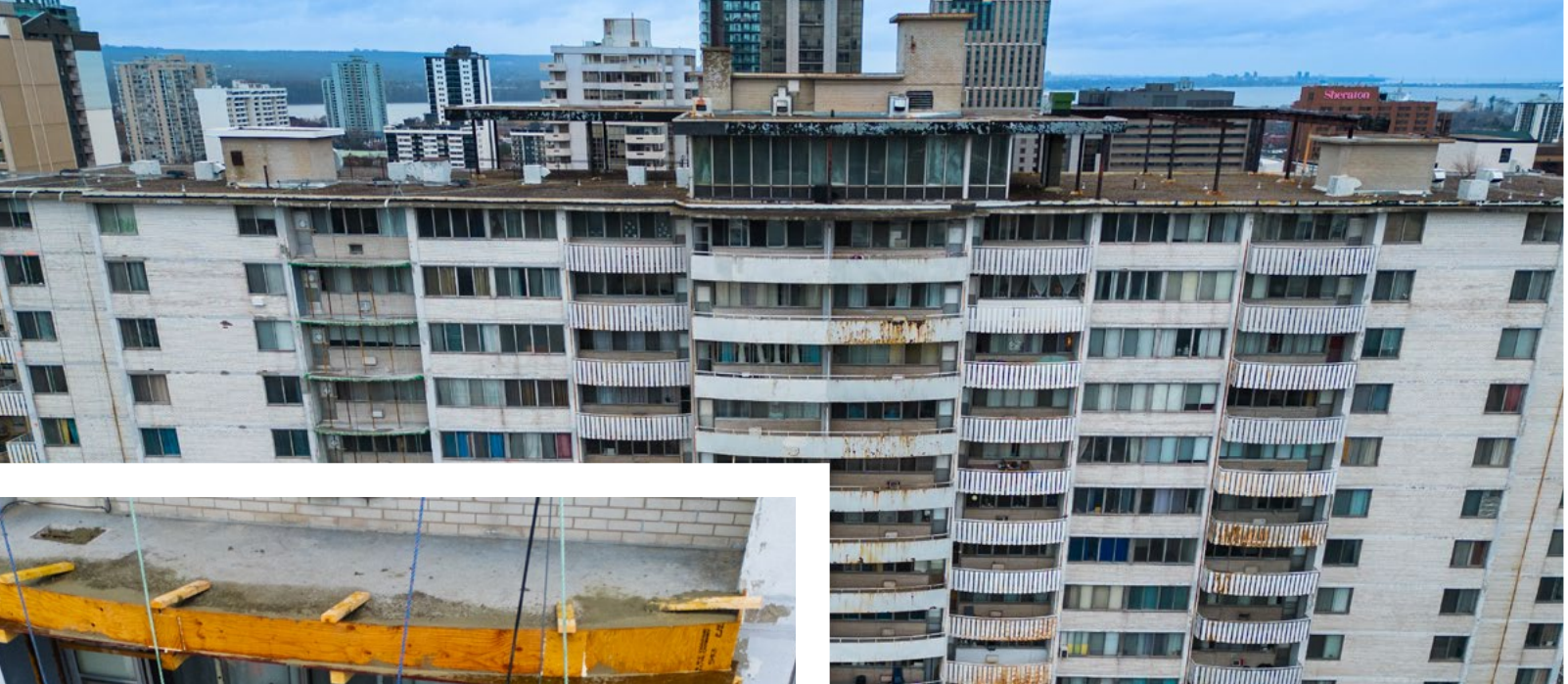


## Building Envelope & Balcony Restoration

- Guard Replacement
- Concrete Repairs & Rebar Replacement
- Waterproofing Installation
- Sealant Replacement
- Complete Exterior Building Coating





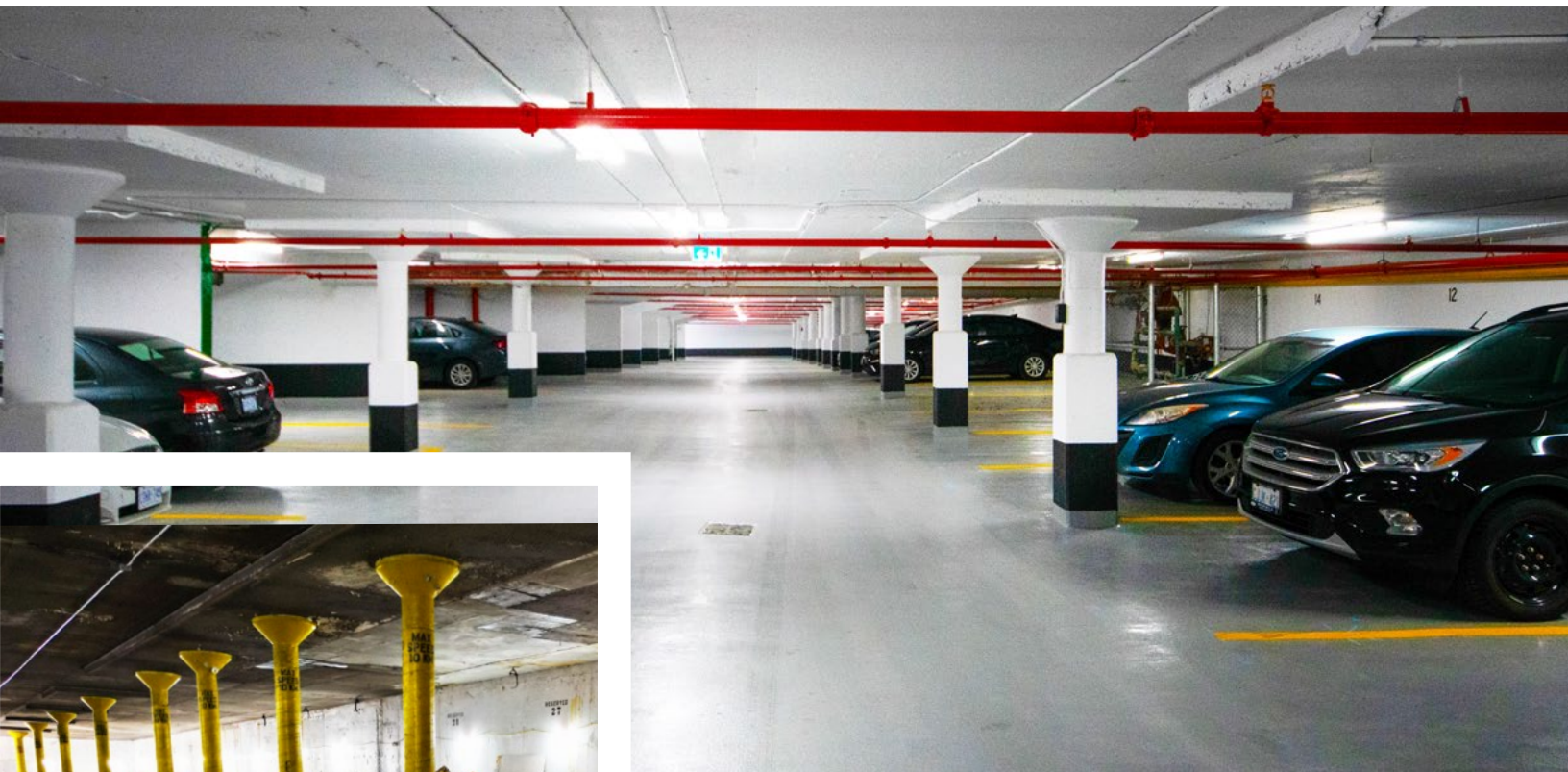


## Building Envelope & Balcony Restoration

- Guard Replacement
- Concrete Repairs & Rebar Replacement
- Waterproofing Installation
- Sealant Replacement
- Complete Exterior Building Coating







## Parking Garage Rehabilitation

- Structural Slab Replacement
- Structural Column Reconfiguration
- Complete Mechanical & Electrical Replacement
- Full Traffic Topping Waterproofing System
- Complete Garage Painting
- Full Expansion Joint Replacement



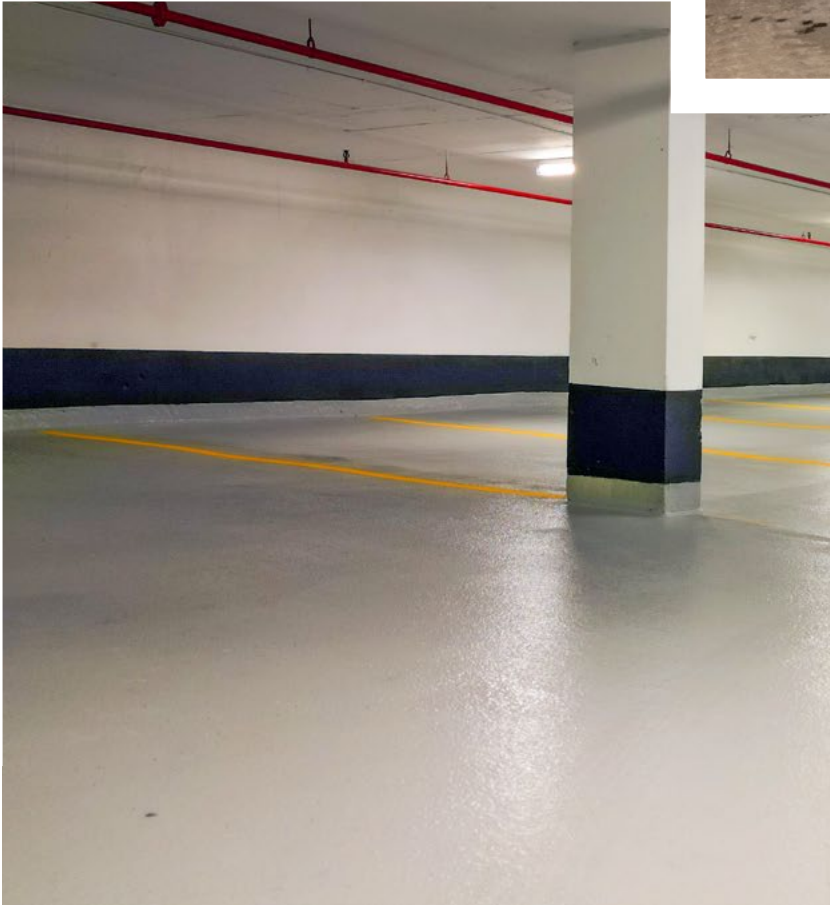


## Parking Garage Rehabilitation

- Structural Slab Replacement
- Structural Column Reconfiguration
- Complete Mechanical & Electrical Replacement
- Full Traffic Topping Waterproofing System
- Complete Garage Painting
- Full Expansion Joint Replacement

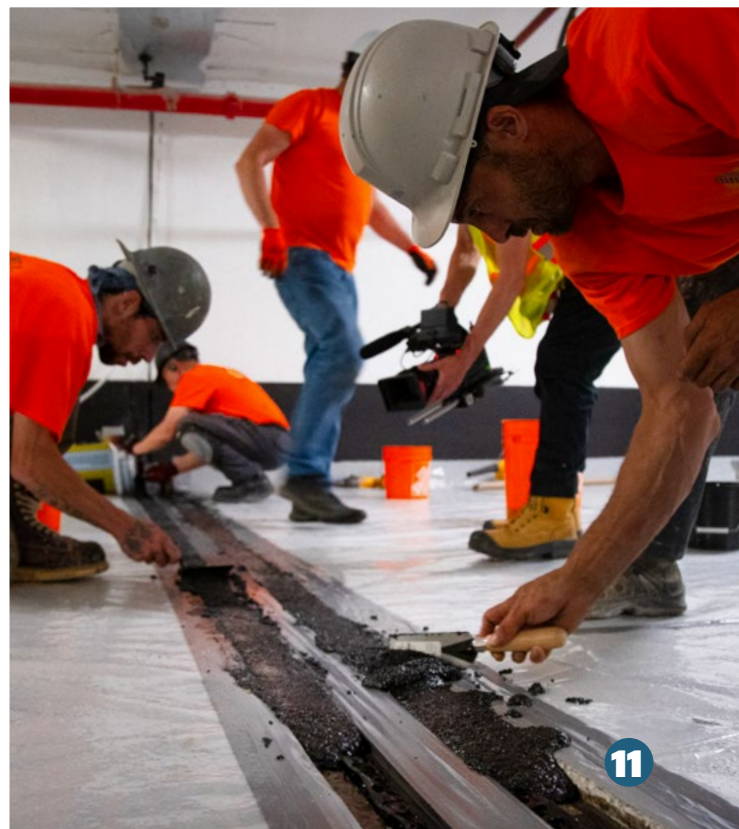






## Parking Garage Rehabilitation

- Structural Concrete & Column Repairs
- Drain Replacement Throughout
- Complete Garage Painting
- Full Traffic Topping Waterproofing System Replacement
- Full Expansion Joint Replacement

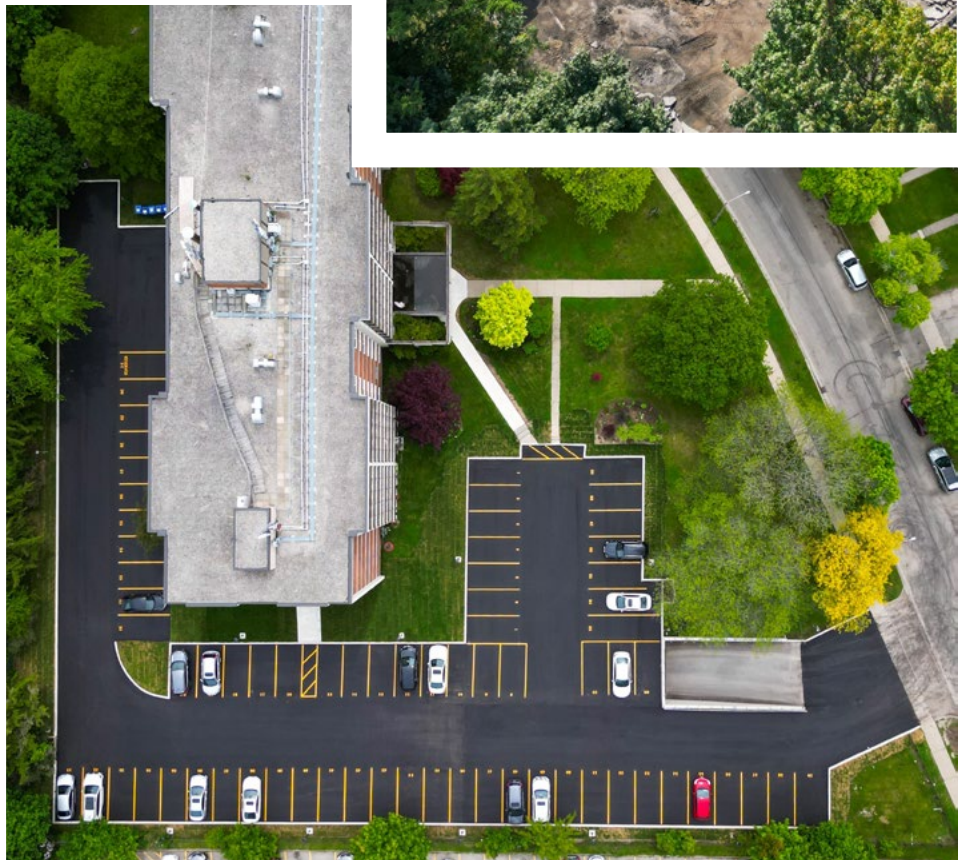






## Parking Garage Deck Replacement

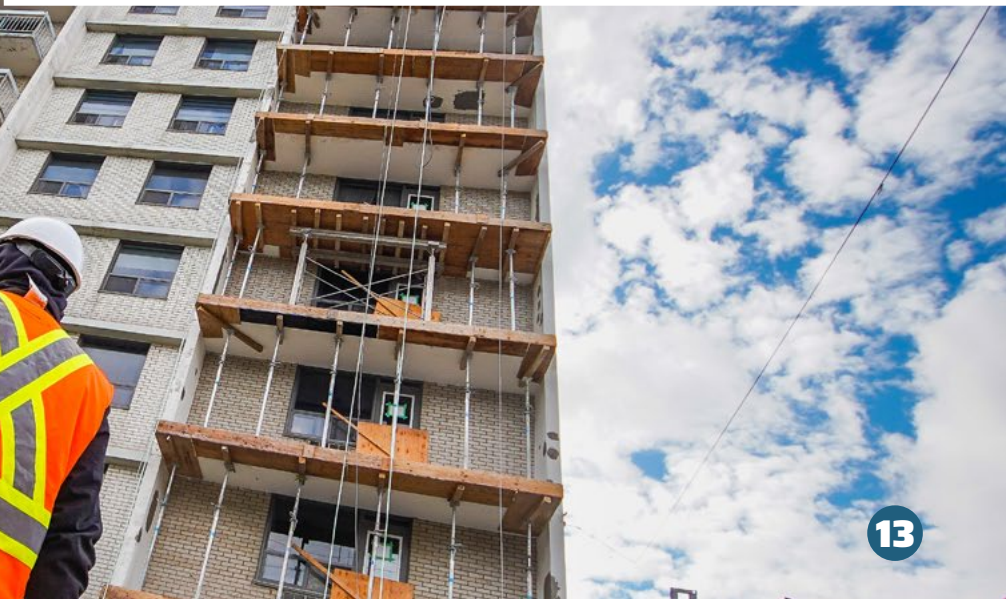
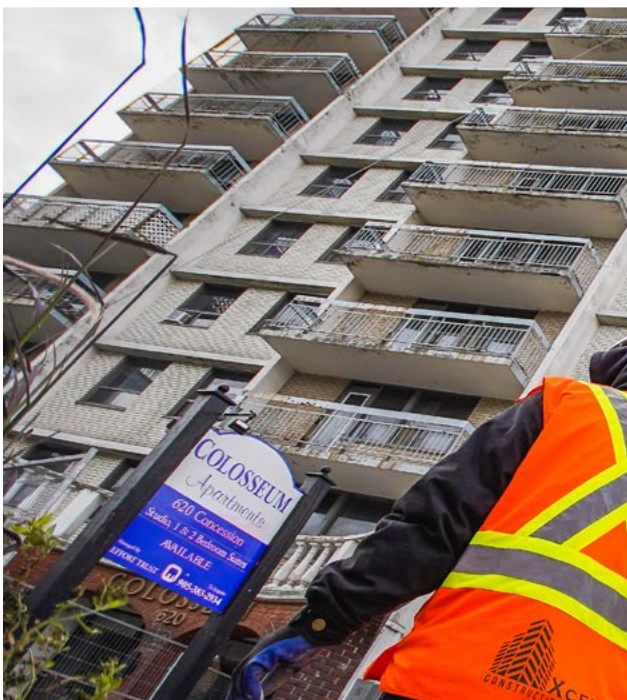
- Full Asphalt & Overburden Removal
- Localized Concrete Repairs & Drain Replacement
- Roof Slab Hot Applied Waterproofing Installation
- Overburden & Asphalt Replacement
- Parking Line Painting



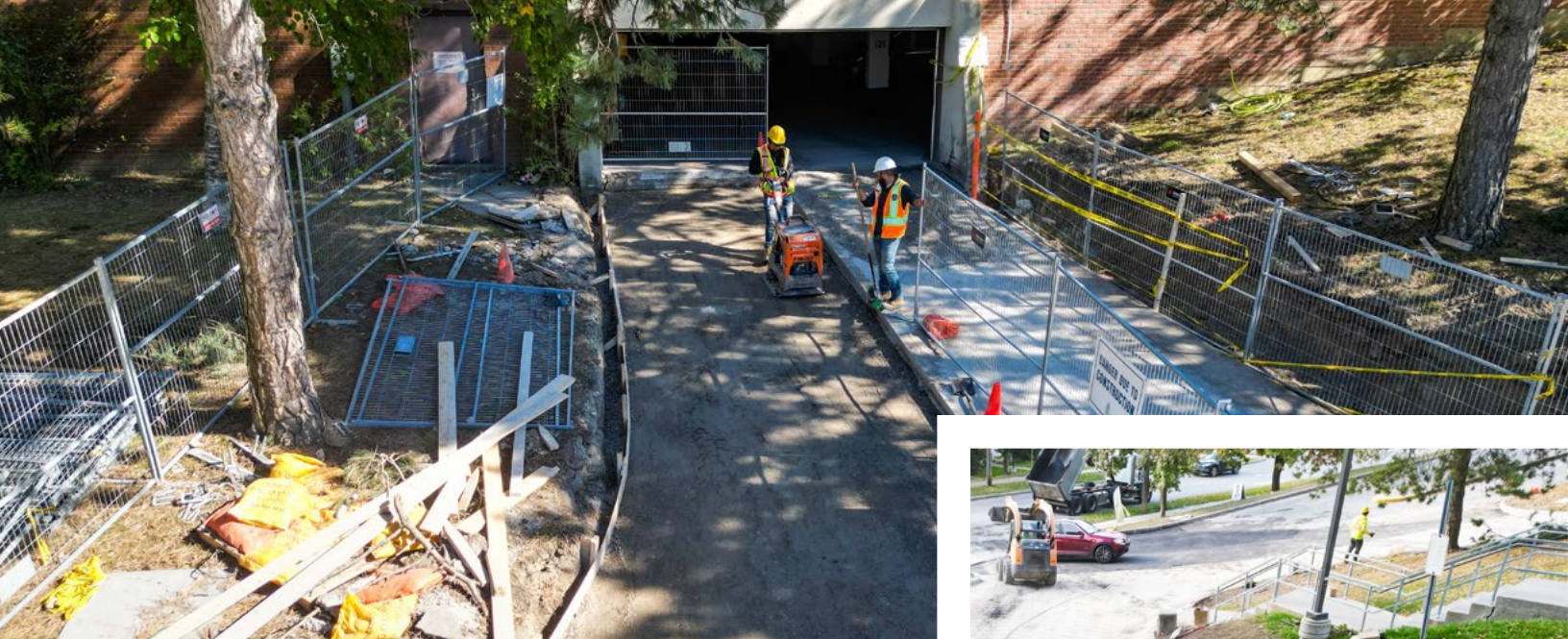


## Building Envelope & Balcony Restoration

- Guard Replacement
- Concrete Repairs & Rebar Replacement
- Waterproofing Installation
- Sealant Replacement
- Complete Exterior Building Coating







## Heated Ramp & Cable Replacement

- Full Ramp Topping & Concrete Removal
- New Concrete Ramp Placement
- Curbs & Trench Drain Replacement
- Heating Cable Installation
- Asphalt Installation







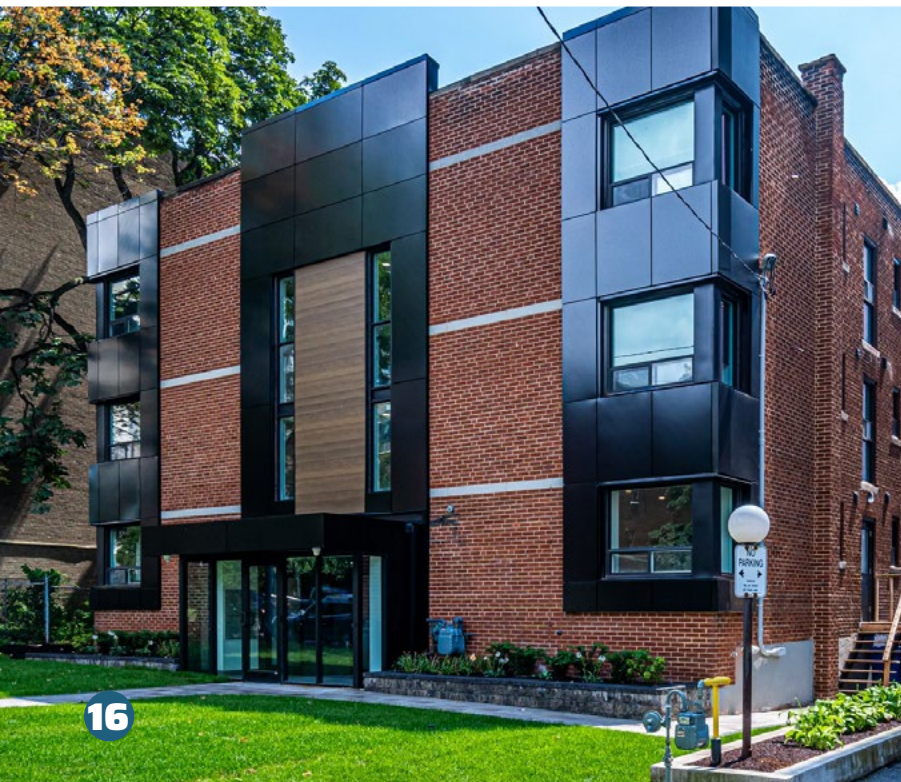
## Front Lobby Renovation

- Full Demolition & Reconfiguration
- New Entrance & Vestibule
- Smart Entry System & Automated Doors
- All New Tiles & Wall Panels
- Ceiling Tiles & Lighting Replacement
- Full New Mail Room & Mailboxes



# Front Lobby Renovation

- New Entrance, Canopy & Vestibule
- Intercom & Security System Replacement
- ACM Panel Installation
- New Landscaping & Interlocking





# OUR FOUNDERS

[Click For Full Team](#)

## David Pusateri, President

As President of Xcel Construction, David Pusateri combines a formal education in construction engineering with more than 15 years of hands-on industry experience. He leads Xcel's core specialties in building envelope repairs and parking structure restoration, keeping projects focused on long-term performance, practical solutions, and clear communication with clients.

David's leadership is grounded in integrity, accountability, and collaboration. From his early days on site to managing complex restoration programs, he has built a reputation for doing things the right way—prioritizing safety, quality, and transparency at every stage. Under his guidance, Xcel Construction continues to be a trusted partner for owners, property managers, and consultants looking for straight answers, innovative repair strategies, and consistently reliable results.



## Nick Bressi, Vice President

As Vice President of Xcel Construction, Nick Bressi brings over 15 years of industry experience to overseeing both project delivery and day-to-day operations across North America. Well-versed in operations and marketing, he plays a key role in shaping Xcel's reputation and performance—from how projects are planned, staffed, and executed to how the company is presented to clients, partners, and the broader industry.

Nick works closely with project teams, site supervisors, and office staff to ensure projects are well-coordinated, efficient, and client-focused. He's deeply committed to building strong relationships, maintaining clear communication, and supporting a high standard of workmanship on every job. Above all, Nick strives to foster a family-style culture at Xcel Construction—where people feel valued, supported, and connected—believing that when the team feels like family, they take even greater pride in delivering exceptional results for clients.



# SUPPORTING OUR COMMUNITY

Xcel Construction is committed to giving back and supporting meaningful community programs. We proudly contribute to Wellspring Chinguacousy, Kids Up Front, Creating Alternatives, SickKids, the Salvation Army, and Rethink Breast Cancer.

Our involvement helps provide care, opportunities, and support to individuals and families in need.

We stay connected and involved in the industry through memberships and events with organizations like BOMA, CCI, SWA, CASF, the Greater Fort Lauderdale Chamber of Commerce, ABC Florida East Coast, and many more.

Together, we strive to strengthen both our communities and our industry.





# ACCREDITED ASSOCIATIONS

## CANADA



## USA





# GET IN TOUCH

---

## Toronto, Canada (Head Office)

Ottawa | Calgary | Vancouver | Halifax



416-864-4460

## Florida, USA (Head Office)

Miami | Palm Beach | Ft. Lauderdale | Naples



786-743-7977

