



COMPANY PROFILE



STRENGTH CON



ABOUT OUR COMPANY

Xcel Construction is a leading provider of Building Envelope Restoration, Parking Structure Restoration and Re-Decking, Protective Coatings and Painting services across North America. With over 30 years of combined expertise, we deliver exceptional solutions for the commercial, industrial, and multi-unit residential sectors, ensuring each project meets the highest standards of craftsmanship, innovation, and precision.

Our experienced team prioritizes safety, transparency, and customer satisfaction, guaranteeing that every project is executed with unmatched quality and reliability. Through clear communication and a commitment to industry best practices, we have built a solid reputation for excellence and trust.

At Xcel Construction, we don't just build—we set new industry benchmarks. By integrating cutting-edge techniques and adhering to the latest standards, we provide forward-thinking solutions that stand the test of time, meeting the diverse needs of clients across North America. Partner with us to build a future where expertise, innovation, and integrity shape every project.



OUR S E C U R E V A L U E



Safety



At Xcel Construction the safety of our employees and clients is our highest priority. We are committed to maintaining the highest industry standards and take pride in our strong track record of OSHA (Occupational Safety & Health Administration) compliance. Our team members hold OSHA training certifications, and we enforce a comprehensive safety program that includes regular safety meetings, ongoing employee training, and strict adherence to safety protocols. Additionally, all access equipment is fully compliant with OSHA regulations and undergoes routine inspections by certified rigging specialists to ensure optimal safety and performance. Through the use of advanced specialized equipment, the construction of overhead pedestrian and vehicular safety systems, and the implementation of pedestrian traffic tunnels, Xcel Construction remains steadfast in its commitment to creating and maintaining the safest possible work environments on all projects.



Work Culture

At Xcel Construction, we foster a collaborative, respectful, and growth-driven culture where every voice is valued, and success is shared. Our team is more than just colleagues—we're a tight-knit group that supports and challenges each other. With a focus on teamwork and innovation, we bring together diverse skills to achieve common goals. At Xcel, we don't just build structures—we build careers, relationships, and a workplace where people thrive.



Our Clients

Our clients are a crucial part of our business and success, and we deeply value the trusted relationships we've built with them. We understand that each project is a unique journey, and we take great pride in customizing our services to align with our clients' specific needs and aspirations. Our commitment goes beyond building structures; it's about building meaningful partnerships grounded in trust, transparency, and a shared vision for long-term success. We care deeply about our clients and their goals, and we strive to exceed expectations in every aspect of our business.

OUR MISSION



At Xcel Construction, our mission is to redefine excellence in the restoration and repair of building envelopes. We are committed to delivering superior construction solutions with a relentless focus on safety, quality, and innovation. Each project is executed with the utmost care and adherence to the highest safety standards, ensuring the well-being of our team, stakeholders, and clients.

Customer satisfaction is the cornerstone of our success. We engage closely with our clients to understand their unique needs and tailor our services to not just meet but exceed expectations. Our dedication to delivering exceptional craftsmanship and innovative solutions is what sets us apart.

As we grow, our goal is to expand our skills and processes across North America, with the ambition of becoming a household recognized brand in the restoration industry. We aim to be a company that provides long-term opportunities for many people and their families, creating a workplace where individuals thrive for years to come.

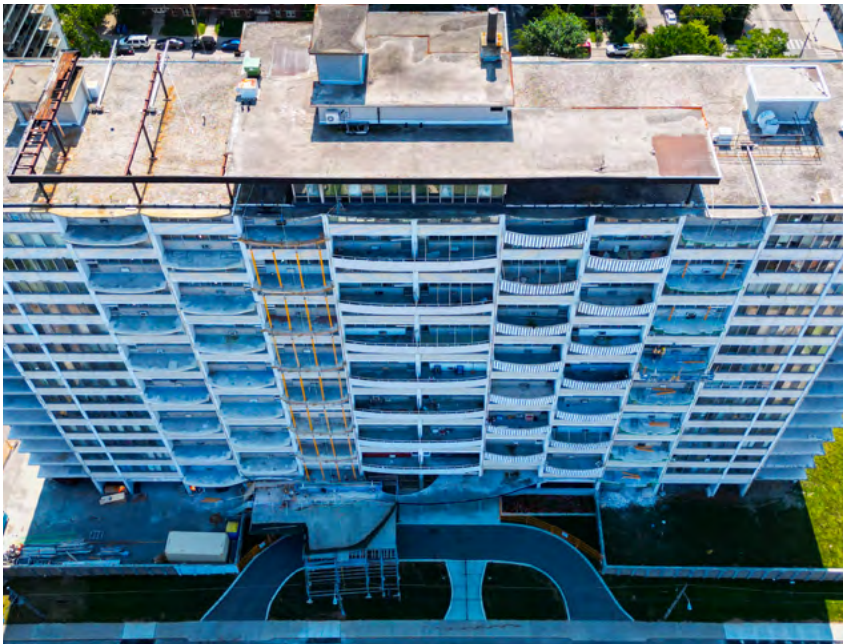


OUR SERVICES

- **Construction Management**
- **Industrial, Commercial & Institutional**
- **Parking Structure Rehabilitation**
- **Structural Restoration**
- **Post Tension Cable Repairs**
- **Concrete and Masonry Repairs**
- **Balcony Restoration & Sealant Replacement**
- **Windows, Railings & Door Replacement**
- **Caulking, Coatings & Painting**
- **Waterproofing & Epoxy Injections**
- **Traffic Topping Waterproofing Systems**
- **Expansion Joint Replacement**
- **EIFS, Stucco & Panel Systems**
- **Roofing, Membranes & Asphalt**
- **Full Interior Design & Renovation**
- **New Construction Development**

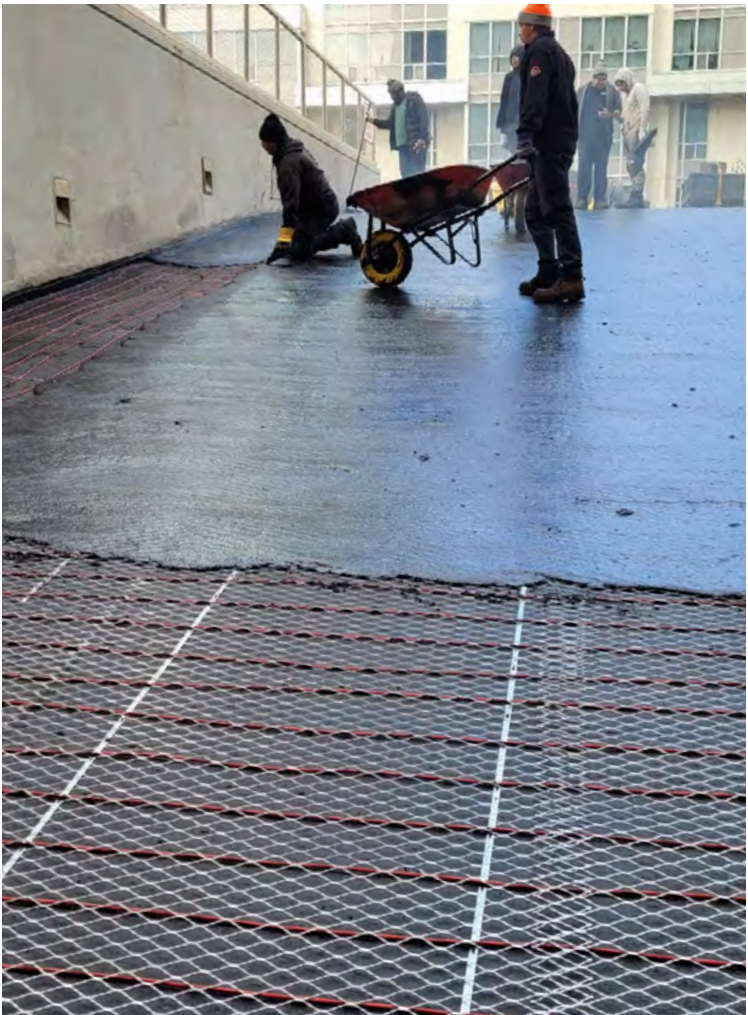














MEET OUR TEAM



David Pusateri, President, Co-founder

As President of Xcel Construction David Pusateri brings visionary leadership and extensive industry experience to drive excellence in building envelope repairs and parking structure restoration. His guidance ensures Xcel Construction is synonymous with integrity and innovation in every project.



Nick Bressi, Vice President, Co-founder

As Vice President of Xcel Construction Nick Bressi oversees both projects and company operations with precision and expertise. Leveraging his strategic vision, Nick ensures seamless project execution, from planning to completion, while simultaneously optimizing overall company operations.

Amir Kendic, Business Development Manager

Amir Kendic is a results-oriented business development professional for Xcel Construction. With expertise in identifying and capitalizing on new opportunities, Amir excels in building strong relationships with clients and partners. His strategic approach and proactive mindset contribute to the company's growth and success in the dynamic construction industry.



AFFILIATES AND ACCREDITED ASSOCIATIONS



American Concrete Institute
Always advancing



GET IN TOUCH

MIAMI



786-743-7977

